

The Decorating News



Roberta@AndersonHomesRedesigned.com

360.471.4663

www.AndersonHomesRedesigned.com

The Art of Accessorizing Series Part 2-Hanging Artwork

Now that we have the lighting in place we can move on to the fun stuff—The Accessories!

When accessorizing your space, begin with the focal wall in the room to make the most impact with the accessories you have. After decorating the focal wall, work clockwise around the room. Don't try to "stretch" the art to fill the room. Focus on each area of the room and make it the best it can be. If there are empty areas when you are done, you will have a better idea of what accessories you will need to purchase to finish decorating the space. Here are some guidelines for working with accessories. Attention to detail is very important at this stage of the decorating game.

Eye level...who came up with that one?

Whose eye level are we using...the 6' husband or the 5' wife? When hanging artwork, it is important to consider the function of the room. If the room your are decorating is a room you are typically seated in, then the artwork needs to be placed lower so you can appreciate it while seated on the furniture. A good rule of thumb is to hang artwork so the center of the picture or group of pictures is approximately 54" from the floor. When placing artwork over a piece of furniture, such as a sofa or a table, hang it no higher than 9"- 12" over the furniture. Doing so will relate the art to the furniture.



Spacing is another important consideration. Many people tend to spread out the artwork so it seems to occupy a larger area. This tends to minimize the beauty of the accessory story. A good rule of thumb is to space wall art about a palm's width apart which visually relates the items. If the pictures are smaller than a 12" x 18" then decrease the space between pictures.

Continued on pg 2



To book Roberta to speak at your upcoming event, contact her at

360-471-4663

www.AndersonHomesRedesigned.com



INTERIOR REDESIGN INDUSTRY SPECIALISTS

Roberta's Favorites. . .

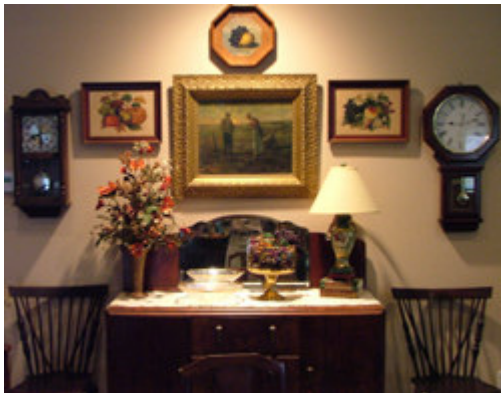
TeeDee Company Home Consignment *"A Place of Gently Used Furnishing, Décor and so much more."* 3541 NW Carlton in "Old Town" Silverdale

I try to pop in **TeeDee's** weekly because there is always something new to discover! From glassware to rugs, upholstery to tables, bedroom furniture, artwork and lamps, you just never know what you'll discover each week! If I am looking for that something special Erin or Lisa, will give me a call and let me know when they have found it. When I've got something to sell, I know TeeDee's is the place to sell it.

Stop by and say hello. If you're lucky you may even get to see Erin's sweet little grandsons visiting! Hours of operation: Tues, Thurs, Fri, & Sat. 11-5; Wed. 11-7
Owner Erin Decker can be reached at 360-692-7544

Hanging artwork continues from pg 1

- Observe placement of dark and light frames as well as matting colors. You are trying to achieve a sense of balance by mixing the colors throughout the grouping. If you are unsure of your choices, cut out the shapes from kraft paper and tape it on the walls to get some sense of your grouping. Now visualize an imaginary line around the overall composition - does it fit inside a rough shape or form such as a rectangle, oval, triangle, or square.
- Groupings or single pictures should occupy about 2/3 of the space of the piece of furniture it is hanging over to achieve the proper proportion.



- Old rules say put the heavier piece on the bottom, but don't be afraid to break some rules. It will give the grouping a more interesting look.
- Tuck artwork in unusual places, for example, between the lamp table and lampshade. This will create a nice surprise for the eyes.
- Use accessories to expand a piece of furniture. If you have a vertical narrow piece of furniture, adding artwork on the side of it can expand the size and soften the strong vertical line.
- Repeating a line is visually interesting. A wreath over the mantle flanked by a round plate will pull the entire grouping together.
- When adding a mirror to the wall art mixture, pay close attention to what is actually reflected in the mirror when you are seated in the room. Traditionalists place a mirror over a mantle but in most cases all that is reflected is the ceiling and light fixture. This is not the reflection you want your family and guests to focus on. A mirror should be used to expand space or reflect light into a room.

Feel free to forward this newsletter to your friends and family. If you would like to be added or removed from the mailing list, please email **Roberta@AndersonHomesRedesigned.com** and place the word "remove" or "subscribe" in the subject line of the email.
To schedule your appointment with Roberta call her today at **360.471.4663**